

A SELECTION FROM THE VAST RANGE OF

ClarkeTM

QUALITY PRODUCTS

AIR COMPRESSORS

From DIY to industrial. Plus air tools, spray guns and accessories.

GENERATORS

Prime duty or emergency standby for business, home and leisure.

POWER WASHERS

Hot and cold, electric and engine driven - we have what you need.

WELDERS

Mig, Arc, Tig and Spot. From DIY to auto/industrial.

METALWORKING

Drills, grinders and saws for DIY and professional use.

WOODWORKING

Saws, sanders, lathes, mortisers and dust extraction.

HYDRAULICS

Cranes, body repair kits, transmission jacks for all types of workshop use.

WATER PUMPS

Submersible, electric and engine driven for DIY, agriculture and industry.

POWER TOOLS

Angle grinders, cordless drill sets, saws and sanders.

STARTER/CHARGERS

All sizes for car & commercial use.



Clarke[®] INTERNATIONAL

For spare parts and servicing, please contact your nearest dealer, or Clarke International on

020 - 8988 - 7400

e-mail: Parts@clarkeinternational.com e-mail: Service@clarkeinternational.com

ClarkeTM



SAND BLAST CABINET

MODEL No. SB30

Part No. 7640115

0104

OPERATING & MAINTENANCE INSTRUCTIONS





Thank you for purchasing this CLARKE Sand Blast Cabinet which is designed for professional, workshop use.

Please read this booklet thoroughly and follow the instructions carefully, in doing so you will ensure the safety of yourself and that of others around you, and you can look forward to the Shot Blast Cabinet giving you long and satisfactory service.

GUARANTEE

This CLARKE product is guaranteed against faulty manufacture for a period of 12 months from the date of purchase. Please keep your receipt as proof of purchase. This guarantee is invalid if the product is found to have been abused or tampered with in any way, or not used for the purpose for which it was intended.

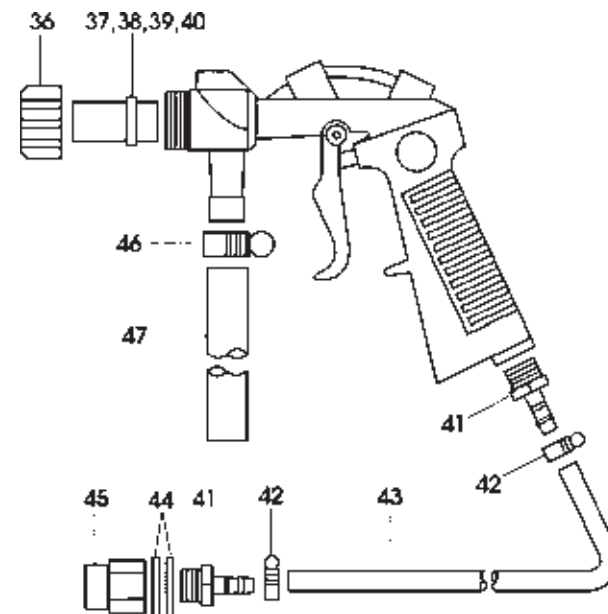
Faulty goods should be returned to their place of purchase, no product can be returned to us without prior permission.

This guarantee does not affect your statutory rights.

CONTENTS

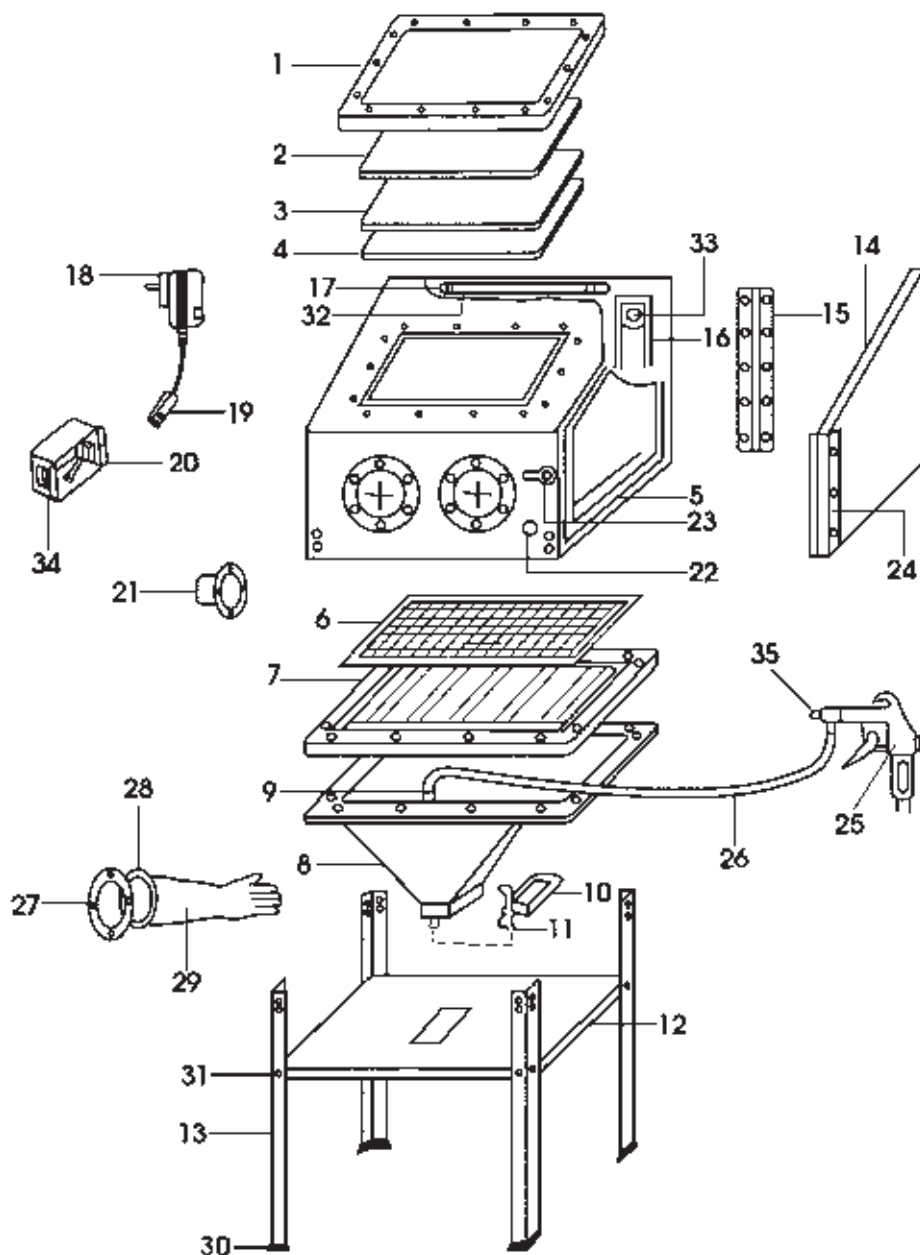
Page

Features	3
Safety Precautions	3
Assembly	4
Operation	6
Changing Nozzles	7
Parts and Service contacts	7
Maintenance	8
Changing the Fluorescent Tube	8
Troubleshooting	9
Parts List and Diagrams	10-11



Item	Description	Part No.	Item	Description	Part No.
1	Frame	SB9007-01	25	Abrasive Gun	SB9007-25
2	Glass	SB9007-02	26	Suction Hose	SB9007-26
3	Glass Board	SB9007-03	27	Mounting Ring, Glove	SB9007-27
4	Protection Film	SB9007-04	28	Clamp	SB9007-28
5	Cabinet	SB9007-05	29	Gloves, Pair	SB9007-29
6	Steel Screen	SB9007-06	30	Feet	SB9007-30
7	Screen Frame	SB9007-07	31	Screws, Nuts, Washers	SB9007-31
8	Cabinet Funnel	SB9007-08	32	Light, Low Voltage	SB9007-32
9	Abrasive Suction Pipe	SB9007-09	33	Breather Vent	SB9007-33
10	Abrasive Removal Cover	SB9007-10	34	Switch, Low Voltage	SB9007-34
11	Cover Lock	SB9007-11	35	Ceramic Nozzle	SB9007-35
12	Shelf	SB9007-12	36	Nozzle Adapter Nut	SB9007-36
13	Legs	SB9007-13	37	Abrasive Nozzle 4mm	SB9007-37
14	Plastic Door	SB9007-14	38	Abrasive Nozzle 5mm	SB9007-38
15	Hinge	SB9007-15	39	Abrasive Nozzle 6mm	SB9007-39
16	Breather Vent Cover	SB9007-16	40	Abrasive Nozzle 7mm	SB9007-40
17	Light Clamp	SB9007-17	41	Air Hose Adapter	SB9007-41
18	Transformer, Low Voltage	SB9007-18	42	Worm Drive	SB9007-42
19	Plug, Low Voltage	SB9007-19	43	Air Hose	SB9007-43
20	Switch Box, Low Voltage	SB9007-20	44	Flat Washer	SB9007-44
21	Suction Flange, 2½"X2¼"	SB9007-21	45	Air Adapter	SB9007-45
22	Hose Inlet Fitting	SB9007-22	46	Clamp	SB9007-46
23	Latch	SB9007-23	47	Abrasive Intake Hose	SB9007-47
24	Metal Liner	SB9007-24			

Parts Diagram



FEATURES

The cabinet is lit by a low voltage (12 volt) fluorescent tube, fed from a plug-in type transformer. The switchbox is mounted on the left side of the cabinet. The transformer should be plugged directly into the mains supply and connected to the switchbox which contains the ON/OFF rocker switch.

A vacuum extraction device must be used, connected to the port in the left side of the cabinet.

At the rear of the cabinet is a breather, which must be clear at all times.

The cabinet is provided with a window, the inside of which is protected by a clear plastic membrane. The protective membrane may be renewed quickly and easily should it become damaged by the sand blast action.

A variety of abrasive nozzles is supplied with the unit to produce a useful range of power and grit densities to satisfy all requirements. The cabinet is designed for use with dry abrasives ONLY. We recommend Aluminium Oxide (for cleaning steel) and Glass Beads (for cleaning Aluminium).

It is necessary to provide a clean, dry air supply, capable of delivering a minimum of 10 cuft/min at a maximum 100psi. Please consult your air compressor manual, ensuring you comply with all safety precautions regarding the use of air compressors, and observe all necessary precautions when using compressed air. If an air compressor is used, ensure it is located well away from the cabinet.

SPECIFICATIONS

Max. Air Supply 100psi (7bar)
 Min. Air Delivery 10 CFM
 Electrical Supply 230V 50Hz 1ph

PRECAUTIONS

- Ensure you comply with all precautions regarding the use of air compressors and compressed air.
- Ensure all air connections are secure.
- Do Not use the machine if the rubber gloves are ripped or otherwise unserviceable.
- Keep the jet well away from the air inlet hose, gloves, florescent tube and window.
- ALWAYS wear safety glasses. (Normal eye glasses are NOT safety glasses).

ASSEMBLY

Carefully unpack the unit, and check to ensure that no damage was caused in transit. Should any damage be apparent, please contact your Clarke dealer immediately. Remove all components from the carton and check them against the following list.

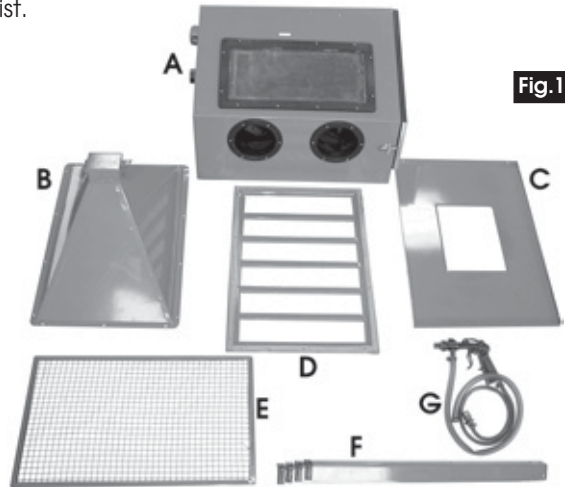


Fig.1

A - Cabinet
B - Cabinet Funnel
C - Shelf
D - Grid Support

E - Grid
F - Legs
G - Gun complete

Loose Parts

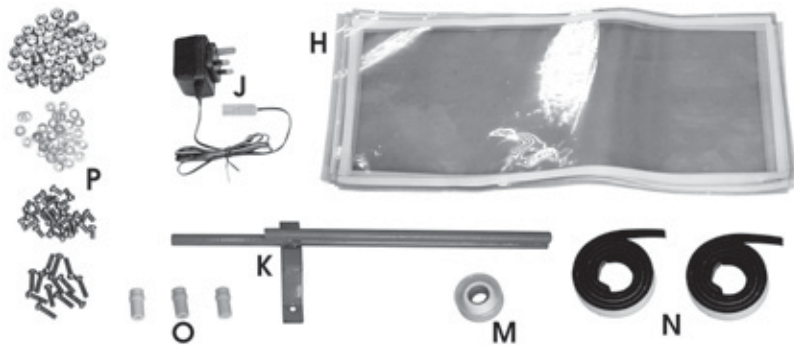


Fig.2

H - Protection Film
J - Transformer
K - Pick-up Tube
M - PTFE Tape

N - Foam Strip (may be fitted)
O - Ceramic Nozzles (1 nozzle fitted)
P - Nuts, Screws and Washers

TROUBLESHOOTING

PROBLEM	CAUSE	REMEDY
Excessive dust in cabinet	No Dust extraction device used. Air vent or airflow is blocked Abrasive media worn Too much abrasive media in the cabinet Loose air line or fitting connections	Install Dust extraction Device. Clean rear vent, and keep vent away from any wall. Replace abrasive media Remove excessive media Tighten fittings and make sure air lines are secure.
Uneven blasting action	Too much abrasive media inside cabinet Abrasive damp Moisture present inside cabinet	Remove excessive media Renew abrasive, or dry thoroughly before use. Check air line to ensure it is free from moisture
Inadequate speed or inefficient blast	Abrasive media worn Pressure too low	Replace abrasive media Increase inlet pressure and ensure control valve is fully opened
Static electricity present.	Dry weather conditions	Leave the item to be cleaned on the grid.
Grit blown into surrounding atmosphere	Door not secure	Secure the door with the clip provided.

Clarke
INTERNATIONAL

Clarke

MAINTENANCE

Before use, check to ensure that all parts are serviceable, including the air inlet hose, rubber gloves and abrasive pick-up.

The door securing clamp, must be perfectly serviceable so as not to allow the door to open during operation. The build up of air pressure within the cabinet could force the door open, allowing abrasive to escape. This is not only wasteful, but could be a health hazard.

Change the window protective film should visibility be impaired. Simply peel off the old film and replace with a new one. Replacement protection film is available from your Clarke dealer

Ensure you comply with all precautions regarding the use of compressed air, and air compressor operation.

Inspect the abrasive media regularly. If badly contaminated, it should be replaced. A hinged cover is provided at the base of the funnel to allow quick draining of the media.

Changing the Fluorescent Tube

Ensure the transformer is disconnected from the power supply before opening the door and cutting the two ties securing the lamp to its retaining clips.

Carefully pull the lamp from its retaining clips then hold the clear plastic protective outer tube firmly and ease off the plastic end cover from the non-wired end. (This may take a little persuasion and perseverance).

Once the end cover has been removed, hold the end cover at the opposite end (the cable input end), and pull off the outer protective clear plastic tube.

The fluorescent tube is now fully revealed.

Pull off the end connector, which secures a wire to one of the pins, taking care not to distort the aluminium reflector. Then pull off the wire secured by a plastic sheath to one of the pins at the cable input end.

Assemble in reverse order, ensuring the wires are correctly held by the plastic sheath at one end and the end connector at the other, with the reflector correctly in position.

Replace the assembly into its retaining clips and test its operation by plugging the transformer in to the mains.

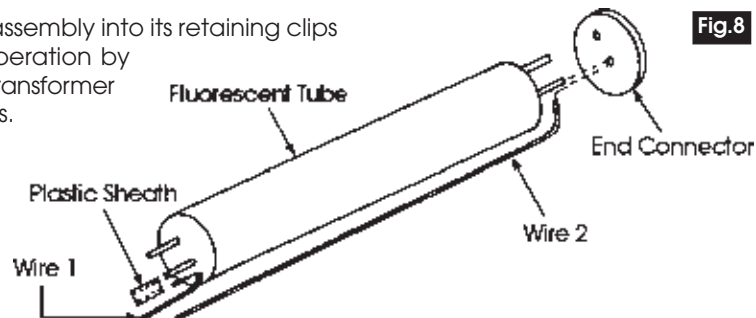
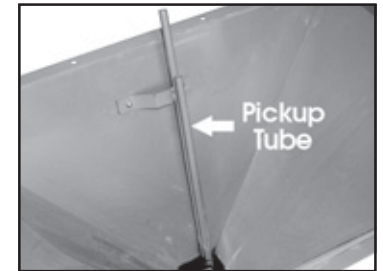


Fig.8

1. Lay the cabinet on its back and attach the four legs using the M6x12mm screws, flat washers and nuts provided, ensuring the flat washers are against the screw heads.

Fig.3

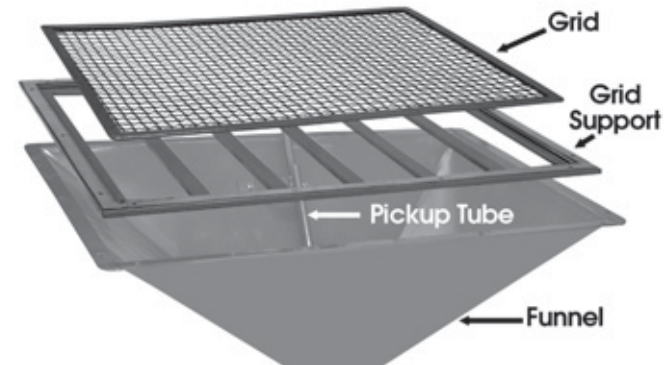
2. Attach the Pick-up tube to the funnel as shown, using the M6x12mm screws provided.



3. If not already fitted, peel the backing paper from the foam strip and apply the strip to the edge of the grid support. Trim the strip accordingly.

4. Use a punch (or similar) to make holes in the foam strip, at the bolt holes.

Fig.4

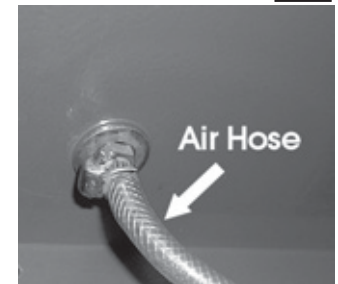


5. Place the Grid Support on the funnel flange and the Grid into the recess in the Grid Support, so that the pick-up tube protrudes through the grid neatly. Do not use undue force.

6. Turn the cabinet on to its legs then, with assistance, raise the funnel to meet the underside of the cabinet, ensuring the pickup tube is at the front of the cabinet. Bolt the funnel assembly to the cabinet using the M6x20mm screws with the nuts and flat washers provided, ensuring the flat washers are against the screw heads.

Fig.5

7. Open the cabinet door and attach the air hose from the gun to the inlet port on the front of the cabinet, then connect the pick-up hose from the gun to the pick-up tube attached to the funnel, securing with the worm drive clip provided.
8. Attach the shelf to the legs using the screws and nuts provided.



NOTE: PTFE tape is provided for use to ensure an airtight fit

OPERATION

Fig.6



Plug the power cable connector into the switch box, then plug the transformer into a standard 230V power supply. Switch the lamp ON by pushing the rocker switch, on the switch box, 'I'. Switch OFF by pushing 'O'.

Ensure all air connections are secure, and the pick up is correctly connected, before filling the cabinet with abrasive media. Do not fill higher than the level of the grid.

Select the ceramic abrasive nozzle to produce the jet required for the abrasive media being used, and assemble according to the instructions given below.

Place the object to be cleaned in the cabinet, and secure the side door.

Turn on the extraction device which must be attached to the port on the left side of the cabinet, before turning on the air supply.

Set the air pressure to the required value, but not higher than 100psi, and check to ensure there are no air leaks. Should there be any, turn off the air supply and repair where necessary, before turning the supply back on. Pull the trigger on the gun and proceed to blast the object to be cleaned.

Keep the jet facing the object and away from the clear plastic lid. Do not allow the jet to train on the rubber gloves, the air hose within the cabinet or the fluorescent lamp.

When completed, release the trigger then turn off the air supply. As a precautionary measure, ALWAYS pull the trigger before opening the door.

NOTES:

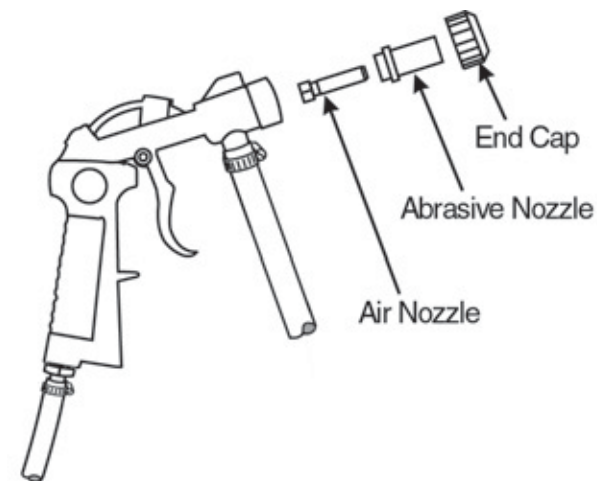
There are no hard or fast rules governing nozzle sizes and air pressures used with different abrasives. With experience and experimentation you will quickly learn the best combinations for the required result.

On more delicate parts, start with minimal air pressure to avoid unnecessary peening or excessive abrasion, and work up to a setting to produce the desired finish.

Should any abrasive be spilled, ensure it is cleaned up immediately, as its slippery properties can be extremely hazardous.

Replacing the Abrasive Nozzle

Fig.7



Ensure the air supply is disconnected before performing this operation.

1. Pull the trigger of the gun as a precautionary measure.
2. Unscrew the End Cap and withdraw the ceramic nozzle.
3. Replace with the nozzle of your choice and carefully thread the end cap back on to the gun, taking great care NOT to cross thread the fine thread.

NOTE:

Should it be necessary to change the Air Nozzle, first remove the abrasive nozzle as described above. A box spanner will be required to unscrew and withdraw the air nozzle.

SPARE PARTS AND SERVICING

For Spare Parts or Servicing, please contact your nearest dealer, or CLARKE International, on one of the following numbers.

PARTS & SERVICE TEL: 020 8988 7400

PARTS & SERVICE FAX: 020 8558 3622

or e-mail as follows:

PARTS: Parts@clarkeinternational.com

SERVICE: Service@clarkeinternational.com